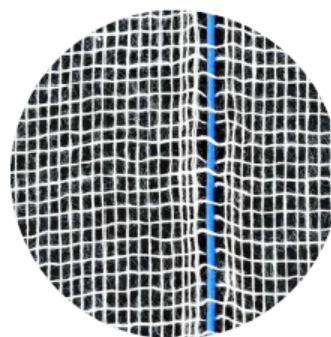




Radiopaque barium thread for easy recognition: if a swab is accidentally left in the operation site



## KRUUSE Gauze Swabs with X-ray thread

The sterile X-ray swabs with folded edges contain a special blue barium sulfate thread, which is radiopaque. If, by accident a swab is missing after surgery, it is easy to detect the swab on

radiographs without having to reopen the patient. Can be used for abdominal surgery with much fluid, which makes it difficult to see, if everything is removed before closing.